



# Notice of construction works - B4118 Birmingham Road and Attleboro Lane

May 2021 | [www.hs2.org.uk](http://www.hs2.org.uk)

High Speed Two (HS2) is the new high speed railway for Britain. Balfour Beatty VINCI (BBV) is working on behalf of HS2 Ltd to build the new high speed railway in your area.

## Bromford tunnel east portal

In 2020, Balfour Beatty VINCI (BBV) mobilised a working space, within land situated to the North of the B4118 Birmingham Road, near Water Orton & Castle Bromwich. During these initial stages of the works, BBV have utilised access and egress points that had already been created. Mobilising onto site allowed BBV to complete enabling works. Now these works are coming towards completion, BBV have begun to create a compound area, which will be used throughout the construction of the Bromford tunnel.

## What work will be taking place

During the coming months works BBV will be completing are listed below:

- Mobilisation of BBV sub contractors, who are creating our tunnelling compound and completing construction works.
- Earthworks, drainage, ducting.

## COVID-19

We are continually reviewing the works on our construction sites in line with the Government and Public Health England (PHE) advice on dealing with coronavirus. The Government's current coronavirus strategy makes clear that construction activity can continue as long as it complies with this guidance. The health and safety of our workforce and the communities we affect is our key priority. Please be assured that those sites that are currently still working are doing so because they

**If you have a question about HS2 or our works, please contact our HS2 Helpdesk team on 08081 434 434 or email [hs2enquiries@hs2.org.uk](mailto:hs2enquiries@hs2.org.uk)**

## What to expect

- This compound will be a main working area for BBV throughout the construction programme of the Bromford Tunnel
- Continuation of construction vehicles accessing site
- Low levels of noise from our machinery
- Working hours 08:00 – 18:00 Monday to Friday. 08:00 – 13:00 Saturday

## What we will do

- Inform you in advance of any changes to the dates shown through [www.hs2inwarwickshire.co.uk](http://www.hs2inwarwickshire.co.uk) and [www.hs2inbirmingham.co.uk](http://www.hs2inbirmingham.co.uk)
- Keep all sites safe and secure

# Notice of construction works - B4118 Birmingham Road and Attleboro Lane



[www.hs2.org.uk](http://www.hs2.org.uk)

## Working hours

Our compound area will abide to the Code of Construction Practice with working hours. These will be 08:00 – 18:00 Mon – Fri. 08:00 – 13:00 Saturday. Our site team may be on site before and after these times to set up and take down equipment.

## Current and completed construction work

- **Hoarding** – In March 2021 hoarding was erected around parts of the compound to reduce sound and visual impacts to local residents.
- **Utilities** – Water and electricity are now installed to the Bromford East Portal compound welfare facilities.
- **Compound set up** – The installation of facilities on the compound of Birmingham Road is continuing. Including offices, car park and welfare facilities. This is scheduled to be complete by June 2021.
- **Haul Roads** – The haul roads are being implemented on the Bromford East Portal Compound. Soil has been compacted and the layout of parts of the route are down with stone, soon to be concreted. They are expected to be complete by Autumn 2021.
- **Water Orton Viaducts engagement** – The Water Orton viaducts 'Key Design Element' (KDE) was a significant piece of community engagement completed in the local area. We asked the community to be involved in the design of the viaducts by giving the choice of parapet finish options and landscape in the surrounding area. A virtual room was also created within this engagement hosting videos, photos and information about the design. To view this visit [www.hs2.org.uk/explore/water-orton-viaducts-design-february-2021/](http://www.hs2.org.uk/explore/water-orton-viaducts-design-february-2021/).

## Construction work look forward

- **Bentonite plant** – A bentonite plant is used as part of a construction method where in this case we need to construct walls to form part of the tunnel. BBV will be constructing this plant over the coming months.
- **Haul road M6/M42 link road access** – Throughout Spring and Summer, BBV will work with Highways England to construct a new access/egress point off the M6/M42 link road. From there, we will continue to build the internal haul roads that will enable our construction traffic to access site. The haul roads will run from the M42/M6 link road, across Attleboro Lane and into the compound. This will reduce vehicle movements in Water Orton & Castle Bromwich. Construction of the access point and haul roads is due to be complete by Autumn 2021.

# Notice of construction works - B4118 Birmingham Road and Attleboro Lane

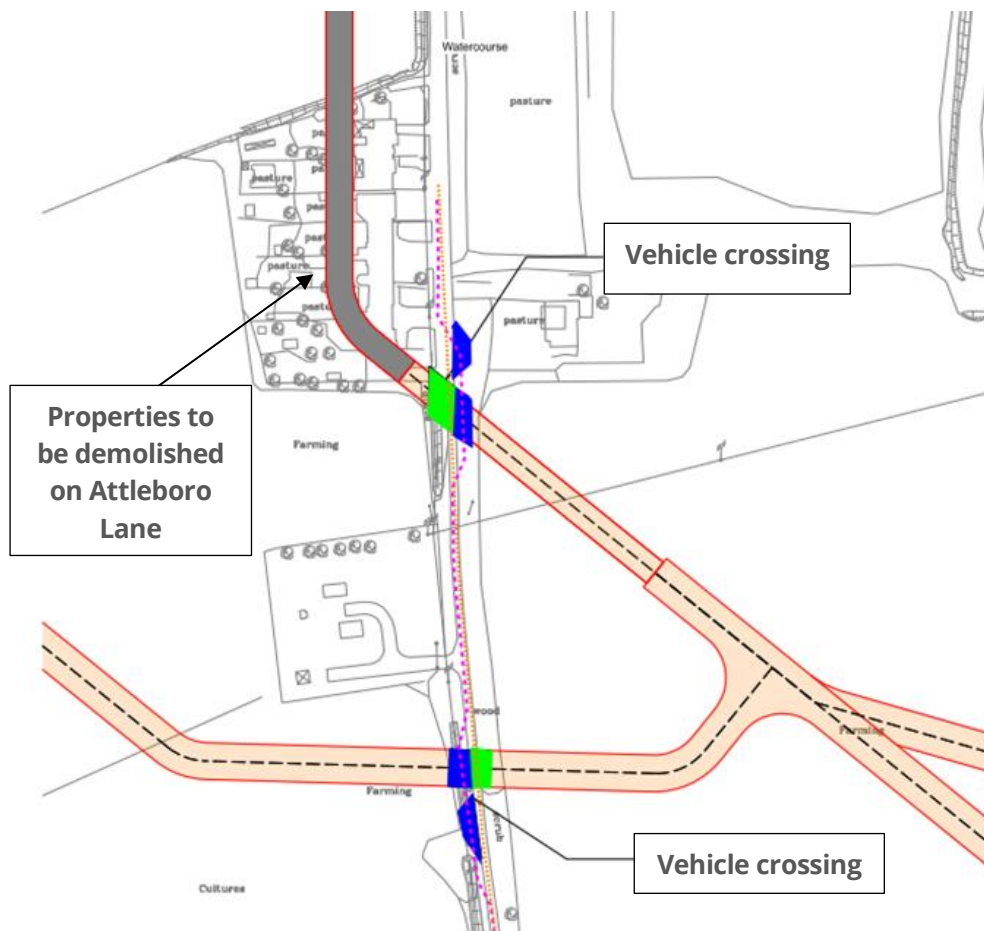
[www.hs2.org.uk](http://www.hs2.org.uk)

Notification



## Construction work look forward

- **Vehicle crossings over the Attleboro Lane** - There will be vehicle crossings over Attleboro Lane; construction of these crossings will start from the end of May and will take around two-weeks to complete. Throughout this time Attleboro Lane will be closed but marshals will be in place to allow pedestrians and resident vehicles in.



Contact our HS2 Helpdesk team on [08081 434 434](tel:08081434434)

# Keeping you informed

We are committed to keeping you informed about work on HS2. This includes ensuring you know what to expect and when to expect it, as well as how we can help.

## Residents' Charter and Commissioner

The Residents' Charter is our promise to communicate as clearly as we possibly can with people who live along or near the HS2 route. [www.gov.uk/government/publications/hs2-residents-charter](http://www.gov.uk/government/publications/hs2-residents-charter)

We also have an independent Residents' Commissioner whose job is to make sure we keep to the promises we make in the Charter and to keep it under constant review. Find reports at: [www.gov.uk/government/collections/hs2-ltd-residents-commissioner](http://www.gov.uk/government/collections/hs2-ltd-residents-commissioner)  
You can contact the Commissioner at: [residentscommissioner@hs2.org.uk](mailto:residentscommissioner@hs2.org.uk)

## Construction Commissioner

The Construction Commissioner's role is to mediate and monitor the way in which HS2 Ltd manages and responds to construction complaints. You can contact the Construction Commissioner by emailing: [complaints@hs2-cc.org.uk](mailto:complaints@hs2-cc.org.uk)

## Property and compensation

You can find out all about HS2 and properties along the line of route by visiting: [www.gov.uk/government/collections/hs2-property](http://www.gov.uk/government/collections/hs2-property)  
Find out if you're eligible for compensation at: [www.gov.uk/claim-compensation-if-affected-by-hs2](http://www.gov.uk/claim-compensation-if-affected-by-hs2)

## Holding us to account

If you are unhappy for any reason you can make a complaint by contacting our HS2 Helpdesk team. For more details on our complaints process, please visit our website: [www.hs2.org.uk/how-to-complain](http://www.hs2.org.uk/how-to-complain)

## Contact Us

Contact our HS2 Helpdesk team all day, every day of the year on:

 Freephone **08081 434 434**

 Minicom **08081 456 472**

 Email **[hs2enquiries@hs2.org.uk](mailto:hs2enquiries@hs2.org.uk)**

Write to:

**FREEPOST**

**HS2 Community Engagement**

Website **[www.hs2.org.uk](http://www.hs2.org.uk)**

To keep up to date with what is happening in your local area, visit: **[www.hs2inyourarea.co.uk](http://www.hs2inyourarea.co.uk)**

**Please contact us if you'd like a free copy of this document in large print, Braille, audio or easy read. You can also contact us for help and information in a different language.**

HS2 Ltd is committed to protecting personal information. If you wish to know more about how we use your personal information please see our Privacy Notice <https://www.gov.uk/government/publications/high-speed-two-ltd-privacy-notice>

**Reference number: HS2-EW-BBV-Ph1-Ar-No-N2-Prog-works-10-16/03/2021**

High Speed Two (HS2) Limited, registered in England and Wales.

Registered office: Two Snowhill, Snow Hill Queensway, Birmingham B4 6GA.

Company registration number: 06791686. VAT registration number: 888 8512 56.